

# MSD 1200 Serie Modular drying & storing cabinet

Designed to guard moisture sensitive devices against the dangers of oxidation and moisture, the proven Totech MSD 1202 features relative humidity or less than 1%rH. This pioneering dry cabinet is characterised by an innovative modular construction which enables operators to add More chambers or dry units as their production demands evolve.

**Configuration** · The cabinet is equipped with four extendable shelves fitted as standard. Each shelf can be flexibly integrated at 5 cm increments. Maximum weight of each shelf is 50 kg. The cabinet can be loaded from 2 sides due to the backside doors.

**Operation** · A user- friendly control system allows users to easily set: humidity, humidity alarm, heater (optional) & door alarm. Optional PC Software enables all data to be read, saved and documented, while an RS232 interface facilitates further online control.

**Alarm** · For optimal reliability, if humidity increases by more than the level specified, or if a door stay open, an alarm will be sounded to alert the operator. Optional: external optical-/ sound alarm by alarm tower.

**Sensor** · The cabinet's high-performance Rotronik sensor facilitates accuracy of 1%rH, however, 0,6%rH is also available. Recalibration possibility by easy change of Sensor

**Dry Unit U 5001** · The cabinet's integrated dry unit guarantees a quiet and maintenance- free operation in addition to automatic desiccant regeneration. Average power consumption is only 30 Watt per hour, including a radial fan that delivers effective air circulation. Featuring extremely quick drying, the cabinet will reduce RH levels from 50% to 5% within 240 seconds.

**ESD Protection** · Every Super Dry cabinet carries an EPA label shown its surface resistance value meets IEC613405-01 demands.



## Technical Data

External Dimension	800 x 1950 x 900 mm
Internal Dimension	755 x 1760 x 850 mm
Weight	150 kg
Volume	1100 l
Connection	230 V, 50 Hz, 1000W max

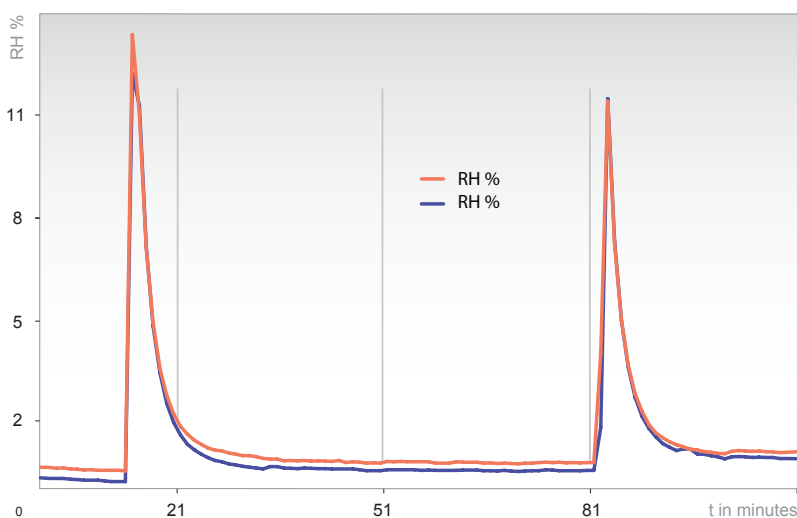


« **Modular Construction** · The cabinet can be easily adjusted to the left and/or the right side with an Extension Cabinet Type 1212. Each of these cabinets features four adjustable feet, castors and four extendable shelves for easy expansion.

**Standard features** · Dry unit U 5001 delivers 1%RH, Control system: humidity, humidity alarm, door alarm, 1% calibrated sensor, (optional 0,6%RH) ESD safe design, colour RAL 7038, humidity control with acoustic signal, (adjustable settings), four extendable shelves, data logging in sensor.

**Options** · Alarm Tower 2 colour with acoustic signal, Extra shelves, Datalogger, Software for read out parameters, Shelf dividers, Reel holders, Different colours available, Extension modules 1212, Heater 40°C, N2 System

### open door test



« **Drying Performance** · The humidity curve show a the drying performance of a basic MSD1212 cabinet taking only 240 seconds to move from 50%RH to less than 5% under unloaded conditions at 25°C. Optimal humidity levels are under 0.5%RH.

